

COATED CORRUGATED BOARD

For Undreamt-Of Advantages



**better
packaging...**

SINCE 1933

*... with the **KOLB** Group and **KOLB** CoatedProducts.
It's a claim that is also a promise. A promise
that we'll provide an impressive variety of packaging
solutions which are new every day.*

*It was back in 1933 that Hans Kolb first founded what has
now become one of the most successful family-owned
companies in the corrugated-board business. Corrugated
board forms the basis of the packaging solutions from
KOLB. Simply explained we are architects for your products
„home“. Your customized packaging solution will be created
by our teams of **KOLB Design** and **KNAUER Design**, the
R&D division of **KOLB** and **KNAUER**.*

*The convincing criteria for reaching your packaging goals
is a modern production environment and, above all, the
know-how of more than 1.200 committed employees.*

Index

| | |
|----|---------------------------------|
| 4 | The Company |
| 7 | COR <i>pro</i> TRONIC® |
| 25 | CORRUST ® |
| 31 | SKINBOARD ® |
| | CORRUST SKINBOARD ® |
| 36 | Special coatings |
| 39 | KOLB Logistics & Service |

VISION

“We supply corrugated cardboard packaging solutions that inspire our customers with their quality, innovation, and sustainability.”

Alwin J. Kolb, Angela Kolb and Andreas Eyd



Our passion is both developing and producing corrugated board packaging solutions. Our claim „besser verpacken!“ is more than just saying KOLB packaging solutions are better. Instead KOLB offers a wide range of developing and logistical service. As a family-owned company based in one of the most beautiful parts of Southern Germany, the Allgaeu, we have been grown together with our customers over the past eight decades.

The Company

The foundation for our success was laid back in 1933. Since then, the KOLB Group has gradually developed into an internationally active company. We design and produce packaging, packaging materials and specialised products made of corrugated cardboard. We see it as our task to respond quickly and flexibly to the ever-changing challenges of the market.

Packaging must meet a wide variety of requirements. The teams in the **KOLB Design** and **KNAUER Design** development departments always take a tailor-made approach. True to the motto 'better packaging!', our designers with many years of experience develop individual solutions.

We offer the latest technologies in packaging printing and thus also unprecedented flexibility for your requirements.

As a manufacturer of environmentally friendly, recyclable products, all members of the KOLB Group are committed to a tradition of sustainability:

The careful use of raw materials and the use of environmentally friendly, partly self-generated energy for modern production processes have always been part of the company's procedures.

The certified KOLB energy management system is only one part of KOLB's sustainability strategy. Our environmental and quality management systems further reinforce this commitment.

Sustainability Through Tradition

LONG BEFORE THE TOPIC OF SUSTAINABILITY WAS DISCUSSED IN DAILY MATTERS, IT WAS EXACTLY THIS COURSE OF ACTION WHICH WAS ROOTED IN OUR COMPANY DNA.

Among other things, we justify this with FSC-certified products that we manufacture at all KOLB and KNAUER sites. Also HANS KOLB Papier, the paper mill of the KOLB Group, also follows this self-image which has been by independent institutes.

Furthermore, we have always had a closed raw material cycle, especially in our own base paper production. After all, edge trimmings and die-cutting waste are directly recycled back into high-quality recycling liner and fluting, for which we also take the waste paper from regional suppliers.

But that's not all: our corporate culture with flat hierarchies and extremely short decision-making paths is also constantly moving us forward - without, however, disregarding what we have achieved and the experience that goes with it. The above-average length of service of our employees is impressive proof of this.

We are also aware of our social responsibility. As a sponsor of the Kinderbrücke Allgäu e. V., we have supported this regional organisation since its inception over 20 years ago. The board of trustees, which includes shareholders of our company, makes the decisions to help sick children and children in need. This is done unbureaucratically, with the necessary common sense or simply with the heart in the right place.

The majority of our production and administration sites are located in the Allgäu region. But where agriculture used to be the outstanding economic mainstay, today a balanced and at the same time specialised industry structure characterises the business location Allgäu. This also applies to the locations in Haiterbach and Dettingen / Erms.

Today we are proud of many long-standing business relationships, which justify joint growth with our customers. We will continue to pursue this development. After all, that is precisely what we mean by sustainability.



CORproTRONIC®



When there is a spark...
ESD Packaging-Systems

CORproTRONIC®

IEC and EN Standards

Requirements according to DIN EN and IEC- The working aids and regulations for handling electronically sensitive components (ESC) are specified in the DIN EN / IEC 61340-5-3 guidelines.

The following applies: Only a very low-resistance, conductive protective layer meets the shielding requirements. Our latest product, **CORproTRONIC®**, protects against electric fields and ESD during transport and shipping.

Electrostatic Discharge ESD

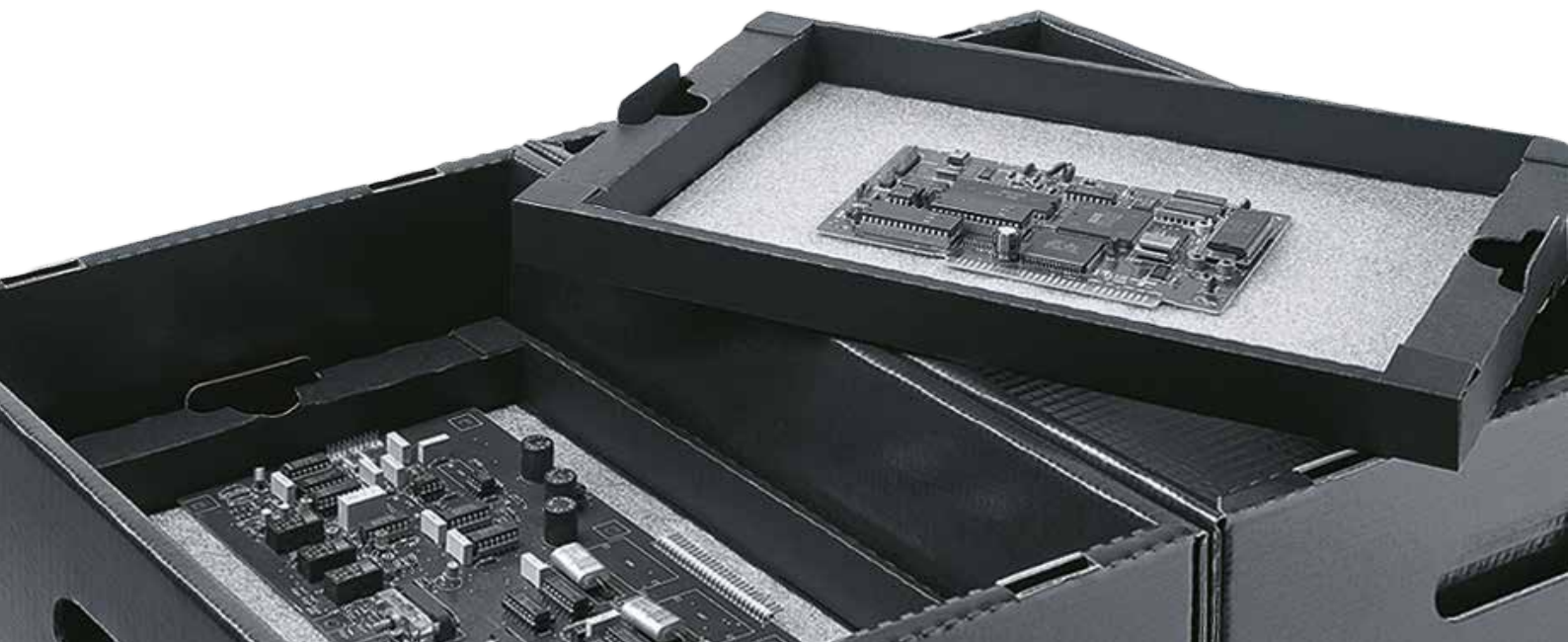
Voltage fields occur everywhere and all the time. The potential differences between these voltage fields pose a risk to your electronic components and assemblies. Protect your high-quality electronics from ESD hazards.

Electrostatic Protected Area

All containers and work equipment in the ESD protection zone (EPA) must be equipped with conductive properties to enable controlled potential equalization or grounding.

The Solution

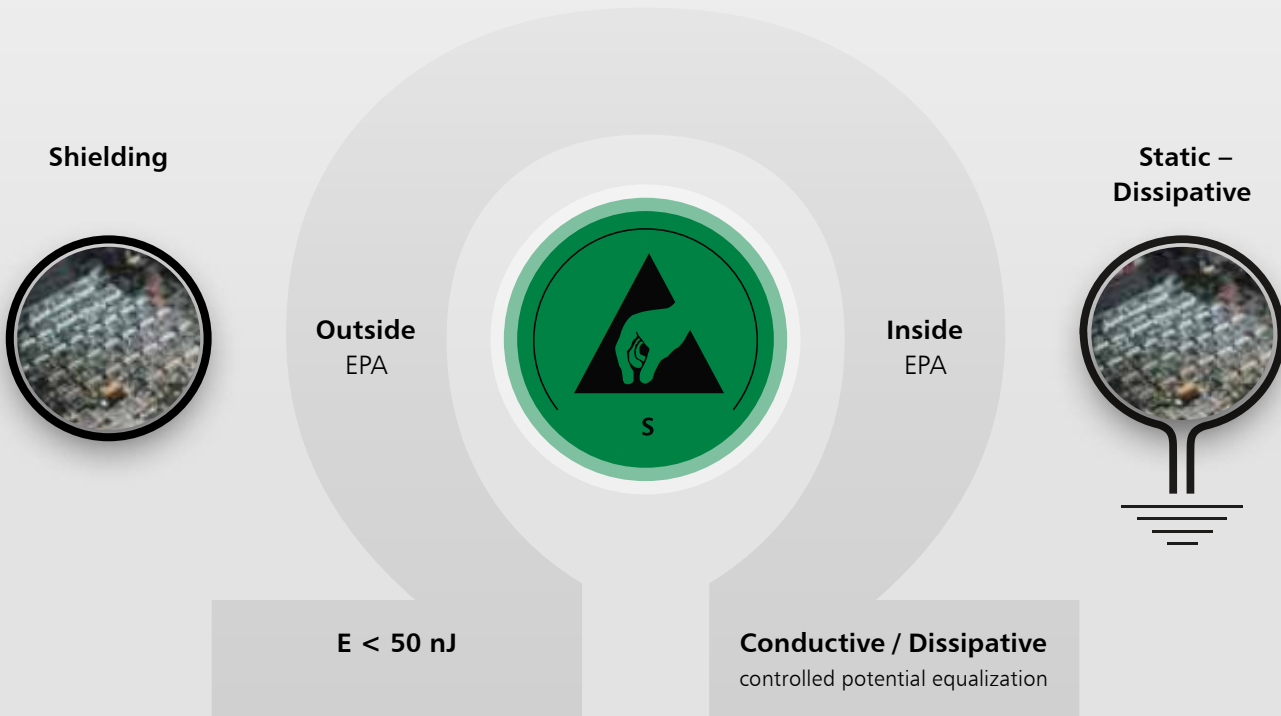
Only the avoidance of large potential differences and the use of shielding layers prevent ESD hazards. Safe and controlled potential equalization: The use of **CORproTRONIC®** with a surface resistance of 10^7 to 10^8 ohms ensures safe potential equalization.



**Permanent conductive –
no time limit**

**COR_{pro}TRONIC® for safe use inside and outside of the
EPA**

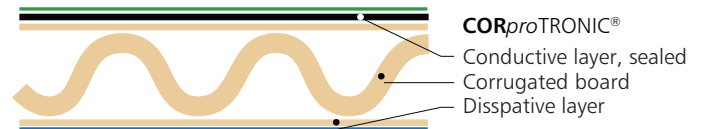
COR_{pro}TRONIC® ≈ 10⁻⁸ diverting layer Ohm
2 x < 10⁴ shielding layer Ohm



Applications

CP-COATED PRODUCTS protect your electronic components. The ESD containers offer special protective coatings that equalize electrostatic voltages and shield fields.

COR_{pro}TRONIC® thus offers the entire range of products needed to protect your electronics from ESD hazards, both now and in the future when new standards come into force. For your safety during packaging, transport, storage, and shipping.



COR_{pro}TRONIC®

| Technical Facts | | COR _{pro} TRONIC® |
|--|--|--|
| Electrical | | |
| Surface resistance (Ohm)* | | |
| - Outside | | <2 x 10 ² |
| - Flute | | |
| - Inside | | 10 ⁶⁻⁷ |
| Controlled potential equalization | | yes |
| Tribocharging | | keine |
| Surface colours | | Outside: Black Inside: Blue |
| Energy Bag Test | | < 10 nJ |
| ANSI / ESD STM 11-31 | | |
| IEC 61340-4-8** | | |
| Chemical | | |
| Corrosion | | none |
| Galvanic potential | | none |
| Recyclability | | Resy 0062 / PAP20 |
| Mechanical | | |
| Resistance to abrasion (varnished surface) | | yes |
| Printability | | limited |
| Moisture | | no limitation of the electrical features |
| Specifications | | |
| Equivalent of | | ANSI/ESD S541 DIN EN 61340-5-3 |
| No subject to RoHS-guidelines (2002/95/EG and 2002/96/EG) | | |
| Weight example | | |
| L 600 B 400 H 120 mm | | 0,58 kg |

* Low-resistance SAW is measured with the strip electrode, high-resistance SAW is measured with the ring electrode.

** Reference: Test specimen size 250 x 200 x 13 mm, E-flute





The Environment

Reliable quality with a long service life:
All ESD containers are specially designed for multiple use. The shielding and dissipative function remains fully intact. The environmentally friendly ESD containers are fully recyclable.



COR_{pro}TRONIC®



**User information for
COR_{pro}TRONIC®/ DISSIPATIVE**

Logistical requirements

Location and transport
Requirement due to
IEC 61340-5-3

Type of coating

Procurement

Product / Component



Transport Packaging

Transport Packaging



Inside an EPA & ESD-Area

(EPA = Electrostatic Protected Area,
ESD = Electrostatic Discharge)

» **conductive**

$$1 \times 10^2 \text{ Ohm} \leq R_s < 1 \times 10^4 \text{ Ohm}$$

or

» **dissipative**

$$1 \times 10^4 \text{ Ohm} \leq R_s < 1 \times 10^{11} \text{ Ohm}$$

Outside an EPA / unmonitored areas

(regular properties)

» **conductive**

$$1 \times 10^2 \text{ Ohm} \leq R_s < 1 \times 10^4 \text{ Ohm}$$

or

» **dissipative**

$$1 \times 10^4 \text{ Ohm} \leq R_s < 1 \times 10^{11} \text{ Ohm}$$

and

» **protection against discharge**

$$< 10 \text{ nJ}$$



COR_{pro}TRONIC® (< 10⁴ Ohm incl. shielding)
DISSIPATIVE (10⁷ – 10¹¹ Ohm)

COR_{pro}TRONIC® (< 10⁴
Ohm incl. shielding)



Ready-to-use packaging and containers out of our stock program (see following pages)

Your advantage: quick delivery, no tool-costs, small quantities possible



Individual Solutions



Please contact your dealer / sales consultant (see last page)
We are able to produce customized solutions regarding your wishes:
size, quantities, print etc.

Containers For Shipment

Standard color: Blue



PCB Transit Boxes with printed warning

CORproTRONIC® Assembled boxes lined with conductive profiled soft foam and conductive pin-insertion foam

| Ref | Item-No. | Inner dimensions, mm | | |
|--------|---------------|----------------------|----|----|
| 01-TVS | 10109361-0001 | 40 | 40 | 15 |
| 02-TVS | 10109362-0001 | 60 | 60 | 24 |

CORproTRONIC® Flat packed boxes, empty

| Ref | Item-No. | Inner dimensions, mm | | |
|--------|---------------|----------------------|-----|-----|
| 05-TVS | 10105775-0001 | 100 | 55 | 25 |
| 06-TVS | 10139319-0001 | 120 | 80 | 30 |
| 10-TVS | 10105776-0001 | 183 | 127 | 38 |
| 15-TVS | 10105777-0001 | 178 | 127 | 64 |
| 20-TVS | 10105452-0001 | 190 | 135 | 40 |
| 30-TVS | 10105778-0001 | 250 | 191 | 38 |
| 40-TVS | 10105779-0001 | 250 | 191 | 64 |
| 45-TVS | 10105780-0001 | 250 | 191 | 110 |
| 50-TVS | 10105781-0001 | 267 | 216 | 64 |
| 55-TVS | 10105782-0001 | 300 | 300 | 100 |
| 57-TVS | 10105783-0001 | 380 | 280 | 60 |
| 58-TVS | 10105784-0001 | 380 | 250 | 120 |
| 60-TVS | 10105785-0001 | 420 | 220 | 40 |
| 65-TVS | 10105787-0001 | 420 | 220 | 65 |
| 67-TVS | 10139309-0001 | 420 | 220 | 100 |
| 70-TVS | 10105788-0001 | 480 | 360 | 64 |

Inserts for PCB Transit Boxes

Profiled Foam Pink

Height 20 mm, dissipative pink, dissipative function lasts at least 6 months



| Ref | Item-No. |
|-------------|----------|
| 05-NS-AS | 12000062 |
| 06-NS-AS | 12003482 |
| 10-15-NS-AS | 12000064 |
| 20-NS-AS | 12000066 |
| 30-45-NS-AS | 12000068 |
| 50-NS-AS | 12000070 |
| 55-NS-AS | 12000072 |
| 57-NS-AS | 12000076 |
| 58-NS-AS | 12000078 |
| 60-65-NS-AS | 12000080 |
| 70-NS-AS | 12000082 |

Profiled Foam Black

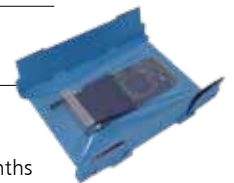
Height 20 mm, (05-NS-EL & 06-NS-EL: 10 mm) conductive, conductive function: At least 5 years



| Ref | Item-No. |
|-------------|----------|
| 05-NS-EL | 12000063 |
| 06-NS-EL | 12003483 |
| 10-15-NS-EL | 12000065 |
| 20-NS-EL | 12000067 |
| 30-45-NS-EL | 12000069 |
| 50-NS-EL | 12000071 |
| 55-NS-EL | 12000073 |
| 57-NS-EL | 12000077 |
| 58-NS-EL | 12000079 |
| 60-65-NS-EL | 12000081 |
| 70-NS-EL | 12000083 |

Flatpac

dissipative, incl. fixation film, dissipative function of foil: At least 6 months



| Ref | Item-No. |
|--------|----------|
| 10-DFP | 12000120 |
| 15-DFP | 12000119 |
| 20-DFP | 12000121 |
| 30-DFP | 12000122 |
| 40-DFP | 12000123 |
| 45-DFP | 12000124 |
| 50-DFP | 12000125 |
| 55-DFP | 12000126 |
| 57-DFP | 12000129 |

Flatpac Quick

mit printed warning

CORproTRONIC[®] Transit box
incl. fixation film*



| Ref | Item-No. | Inner dimensions, mm | | |
|-------|----------|----------------------|-----|----|
| 20-KC | 12000130 | 125 | 107 | 25 |
| 30-KC | 12000131 | 160 | 127 | 34 |
| 40-KC | 12000132 | 235 | 175 | 45 |
| 50-KC | 12000133 | 282 | 228 | 70 |

* Dissipative function of the film: At least 6 months

Foampac E-Prom

with printed warning

CORproTRONIC[®] Transit box
with conductive foam*:

PE - PE-foam (6 mm)

PE-N - PE-foam (6 mm) + profiled foam (10 mm)

N - Profiled foam (10 mm) fully covered

also without foam available (OS)

| Ref | Item-No. | Inner dimensions, mm | | |
|-------------|---------------|----------------------|-----|----|
| 05-TEP-OS | 10107401-0001 | 95 | 30 | 15 |
| 05-TEP-PE | 10110680-0001 | | | |
| 05-TEP-PE+N | 10110681-0001 | | | |
| 05-TEP-N | 10110682-0001 | | | |
| 10-TEP-OS | 10107402-0001 | 100 | 60 | 15 |
| 10-TEP-PE | 10110683-0001 | | | |
| 10-TEP-PE+N | 10110684-0001 | | | |
| 10-TEP-N | 10110685-0001 | | | |
| 15-TEP-OS | 10107403-0001 | 100 | 60 | 30 |
| 15-TEP-PE | 10110686-0001 | | | |
| 15-TEP-PE+N | 10110687-0001 | | | |
| 15-TEP-N | 10110688-0001 | | | |
| 20-TEP-OS | 10105454-0001 | 120 | 100 | 15 |
| 20-TEP-PE | 10110689-0001 | | | |
| 20-TEP-PE+N | 10110690-0001 | | | |
| 20-TEP-N | 10110691-0001 | | | |
| 30-TEP-OS | 10107404-0001 | 155 | 70 | 25 |
| 30-TEP-PE | 10110692-0001 | | | |
| 30-TEP-PE+N | 10110693-0001 | | | |
| 30-TEP-N | 10110694-0001 | | | |

* conductive function: At least 5 years

Foampac

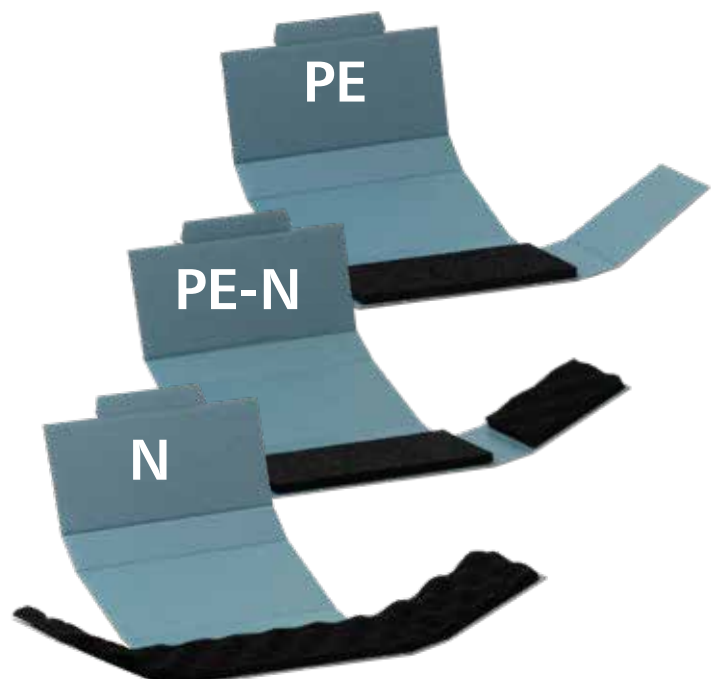
with printed warning

CORproTRONIC[®] Transit box with dissipative profiled foam* (AS / 20 mm) or conductive profiled foam* (EL / 20 mm), also available without foam (OS)



| Ref | Item-No. | Inner dimensions, mm | | |
|-----------|---------------|----------------------|-----|-----|
| 05-TCP-OS | 10107399-0001 | 150 | 115 | 40 |
| 05-TCP-AS | 10109727-0001 | | | |
| 05-TCP-EL | 10109728-0001 | | | |
| 10-TCP-OS | 10105453-0001 | 200 | 140 | 50 |
| 10-TCP-AS | 10109729-0001 | | | |
| 10-TCP-EL | 10109730-0001 | | | |
| 20-TCP-OS | 10107400-0001 | 280 | 140 | 100 |
| 20-TCP-AS | 10109731-0001 | | | |
| 20-TCP-EL | 10109732-0001 | | | |

* Dissipative function of pink profiled foam: At least 6 months



Dissipative

Container For Production And Storage

Outside of container is treated with water-/scratch-resistant coating

Standard color: Black



Reel Box and CORTEC

Outside of container is treated with water-/scratch-resistant coating



| Ref | Item-No. | Inner dimensions, mm | | | Outer dimensions, mm | | | Reels Ø mm |
|---------------|----------|----------------------|-----|-----|----------------------|-----|-----|-------------------|
| 10-CRB | 10004713 | 380 | 176 | 100 | 398 | 193 | 104 | 180, max. 16 Reel |
| 30-CRB | 10005113 | 355 | 286 | 220 | 373 | 306 | 224 | 380, max. 5 Reel |



IC Bar Magazine

for IC bars, stackable, 5 slots

| Ref | Item-No. | Inner dimensions, mm | | | Outer dimensions, mm | | |
|-------------------|---------------|----------------------|-----|----|----------------------|-----|----|
| 10-ICM-B+E | 10004336-0001 | 336 | 586 | 35 | 399 | 599 | 39 |

Storage Box, open and CORTEC



| Ref | Item-No. | Inner dimensions, mm | | | Outer dimensions, mm | | |
|----------------|---------------|----------------------|-----|-----|----------------------|-----|-----|
| 10-CLBO | 10002644-0001 | 285 | 150 | 110 | 305 | 159 | 115 |
| 15-CLBO | 10002879-0001 | 292 | 109 | 122 | 313 | 116 | 127 |
| 20-CLBO | 10002657-0001 | 580 | 65 | 65 | 600 | 73 | 66 |
| 30-CLBO | 10002648-0001 | 592 | 109 | 122 | 611 | 117 | 127 |
| 40-CLBO | 10002649-0001 | 592 | 153 | 70 | 611 | 161 | 75 |
| 45-CLBO | 10002659-0001 | 590 | 200 | 180 | 609 | 209 | 185 |
| 50-CLBO | 10002645-0001 | 615 | 100 | 130 | 634 | 108 | 135 |

Accessories For Production, Storage And Shipment

Dividing Sheets

for 48 / 50-TSC, CSC, MB and TAB
dissipative, black
with 2 bevelled corners



| Ref | Item-No. | Dimensions, mm | |
|---------------|---------------|----------------|-----|
| 05-DZW | 10002650-0001 | 357 | 246 |
| 10-DZW | 10002656-0001 | 550 | 350 |

Adhesive Tape Black

needed for 30, 40, 45, 50-TSC and TAB



| Ref | Item-No. | Length, m | Width, mm |
|--------------|----------|-----------|-----------|
| 10-KB | 12000139 | 66 | 50 |

Label Holder

dissipative, adhesive, transparent,
further sizes upon request



| Ref | Item-No. | Dimensions, mm | |
|--------------|----------|----------------|-----|
| 05-LT | 12000134 | 140 | 100 |
| 10-LT | 12000135 | 215 | 105 |

Container For Production, Storage And Shipment



In-plant handler COR_{pro}TRONIC®

with printed warning, black

The removal of length dividers offers the possibility to vary the compartment size:
Dividers dissipative, for 30, 40, 45 and 50-TSC adhesive tape is needed (sold separately)

| Ref | Item-No. | Inner dimensions* | | | No. of comp. | Comp size* | | | No. of short div. | No. of long div. | Outer dimensions incl. lid* | | |
|------------|---------------|-------------------|-----|-----------------|--------------|------------|----|-----|-------------------|------------------|-----------------------------|-----|-----|
| | | L | B | H | | L | B | H | | | L | B | H |
| 10-TSC | 10166463-0001 | 270 | 169 | 195 | 12 | 130 | 24 | 195 | 1 | 5 | 297 | 181 | 204 |
| 10-TSCD | 10166464-0001 | 287 | 177 | 50 | 6 | 265 | 24 | 195 | | 5 | | | |
| 10-DSC-K | 10002788-0001 | 392 | 169 | (short divider) | | | | | | | | | |
| 10-DSC-L | 10002794-0001 | 392 | 276 | (long divider) | | | | | | | | | |
| 15-TSC | 10166465-0001 | 372 | 388 | 84 | 60 | 109 | 18 | 84 | 19 | 4 | 400 | 400 | 100 |
| 15-TSCD | 10166466-0001 | 390 | 396 | 35 | 40 | 165 | 18 | 84 | 19 | 3 | | | |
| 15-DSC-K | 10002795-0001 | 84 | 372 | (short divider) | | | | | | | | | |
| 15-DSC-L | 10002797-0001 | 84 | 388 | (long divider) | | | | | | | | | |
| 20-TSC | 10166467-0001 | 386 | 386 | 176 | 30 | 110 | 30 | 175 | 4 | 9 | 415 | 405 | 190 |
| 20-30-TSCD | 10166468-0001 | 401 | 401 | 60 | 20 | 168 | 30 | 175 | 3 | 9 | | | |
| | | | | | 10 | 340 | 30 | 175 | 2 | 9 | | | |
| 20-DSC-K | 10002786-0001 | 358 | 383 | (short divider) | | | | | | | | | |
| 20-DSC-L | 10002800-0001 | 266 | 385 | (long divider) | | | | | | | | | |
| 40-TSC | 10166469-0001 | 424 | 272 | 281 | 22 | 178 | 18 | 280 | 3 | 10 | 450 | 290 | 290 |
| 40-TSCD | 10166470-0001 | 438 | 286 | 60 | 11 | 365 | 18 | 280 | 2 | 10 | | | |
| 40-DSC-K | 10002802-0001 | 280 | 269 | (short divider) | | | | | | | | | |
| 40-DSC-L | 10002792-0001 | 523 | 421 | (long divider) | | | | | | | | | |
| 45-TSC | 10166471-0001 | 493 | 390 | 166 | 20 | 178 | 45 | 166 | 9 | 3 | 510 | 410 | 175 |
| 45-TSCD | 10166472-0001 | 505 | 406 | 50 | 10 | 360 | 45 | 166 | 9 | 2 | | | |
| 45-DSC-K | 10002780-0001 | 333 | 390 | (short divider) | | | | | | | | | |
| 45-DSC-L | 10002785-0001 | 333 | 493 | (long divider) | | | | | | | | | |
| 48-TSC | 10166473-0001 | 562 | 355 | 150 | 44 | 123 | 24 | 150 | 5 | 10 | 595 | 380 | 160 |
| 48-50-TSCD | 10166474-0001 | 580 | 375 | 60 | 33 | 165 | 24 | 150 | 4 | 10 | | | |
| | | | | | 22 | 250 | 24 | 150 | 3 | 10 | | | |
| | | | | | 11 | 515 | 24 | 150 | 2 | 10 | | | |
| 48-DSC-K | 10002778-0001 | 150 | 352 | (short divider) | | | | | | | | | |
| 48-DSC-L | 10002799-0001 | 150 | 560 | (long divider) | | | | | | | | | |
| 50-TSC | 10166475-0001 | 562 | 355 | 329 | 44 | 123 | 24 | 325 | 5 | 10 | 595 | 380 | 335 |
| 48-50-TSCD | 10166474-0001 | 580 | 375 | 60 | 33 | 165 | 24 | 325 | 4 | 10 | | | |
| | | | | | 22 | 250 | 24 | 325 | 3 | 10 | | | |
| | | | | | 11 | 515 | 24 | 325 | 2 | 10 | | | |
| 50-DSC-K | 10002793-0001 | 660 | 352 | (short divider) | | | | | | | | | |
| 50-DSC-L | 10002787-0001 | 508 | 560 | (long divider) | | | | | | | | | |

* Dimensions and sizes in mm

Dissipative

Tray

Tray stackable, either with or without foam

OS = **without foam** oder AS = **dissipative** oder EL = **conductive**

| Ref | Item-No. | Inner dimensions, mm | | | Outer dimensions, mm | | |
|-----------|---------------|----------------------|-----|----|----------------------|-----|----|
| 05-CTR-OS | 10003753-0001 | 297 | 230 | 28 | 351 | 246 | 31 |
| 05-CTR-AS | 10003251-0001 | | | | | | |
| 05-CTR-EL | 10003253-0001 | | | | | | |
| 20-CTR-OS | 10002779-0001 | 499 | 330 | 28 | 550 | 346 | 31 |
| 20-CTR-AS | 10003266-0001 | | | | | | |
| 20-CTR-EL | 10003267-0001 | | | | | | |
| 25-CTR-OS | 10002155-0001 | 499 | 330 | 40 | 550 | 346 | 43 |
| 25-CTR-AS | 10002184-0001 | | | | | | |
| 25-CTR-EL | 10002185-0001 | | | | | | |
| 30-CTR-OS | 10002774-0001 | 499 | 330 | 70 | 550 | 346 | 73 |
| 30-CTR-AS | 10003269-0001 | | | | | | |
| 30-CTR-EL | 10003270-0001 | | | | | | |



| EE-Tray with CORTEC assembled with stacking plastic reinforcement | | | | | | | |
|--|---------------|----------------------|-----|----|----------------------|-----|----|
| Ref | Item-No. | Inner dimensions, mm | | | Outer dimensions, mm | | |
| 20-CTR-EE-OS | 10003271-0001 | 496 | 327 | 28 | 550 | 354 | 35 |
| 20-CTR-EE-AS | 10003272-0001 | | | | | | |
| 20-CTR-EE-EL | 10003273-0001 | | | | | | |
| 25-CTR-EE-OS | 10003516-0001 | 496 | 327 | 40 | 550 | 354 | 45 |
| 25-CTR-EE-AS | 10003518-0001 | | | | | | |
| 25-CTR-EE-EL | 10003523-0001 | | | | | | |
| 30-CTR-EE-OS | 10003274-0001 | 496 | 327 | 70 | 550 | 354 | 75 |
| 30-CTR-EE-AS | 10003276-0001 | | | | | | |
| 30-CTR-EE-EL | 10003280-0001 | | | | | | |

CTR Partition Inserts (solid board)

| Ref | Item-No. | Dimensions mm | | No. of slots | Grid mm | No. of dividers max. | Cell dimension min. mm | No. of cells max. |
|----------|----------|---------------|----|--------------|---------|----------------------|------------------------|-------------------|
| 20-CTR-K | 12000055 | 328 | 28 | 14 | 20 | 21 | 20 x 20 x 28 | 330 |
| 20-CTR-L | 12000056 | 497 | 28 | 21 | 20 | 14 | | |
| 25-CTR-K | 12002601 | 328 | 40 | 14 | 20 | 21 | 20 x 20 x 40 | 330 |
| 25-CTR-L | 12002602 | 497 | 40 | 21 | 20 | 14 | | |

CORTRONIC®

Container For Production, Storage And Shipment

Outside of container is treated with water-/scratch-resistant coating

Color: Black

Multibox CORTRONIC® and CORTEC



| Ref | Item-No. | Inner dimensions, mm | | | Outer dimensions, mm | | |
|--------------|---------------|----------------------|-----|-----|----------------------|-----|-----|
| 10-MB | 10003014-0001 | 565 | 365 | 109 | 591 | 391 | 114 |
| 20-MB | 10002932-0001 | 565 | 365 | 209 | 591 | 391 | 214 |

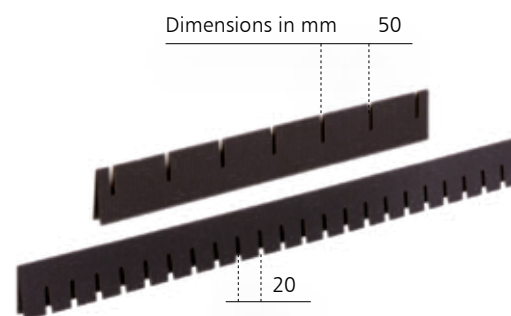
Multibox Lid CORTRONIC® and CORTEC



| Ref | Item-No. | Inner dimensions, mm | | | Outer dimensions, mm | | |
|------------------|---------------|----------------------|-----|----|----------------------|-----|----|
| 10-20-MBD | 10002868-0001 | 593 | 393 | 50 | 603 | 397 | 53 |

Multibox Partition Inserts

for 10-20-MB, dissipative



| Ref | Item-No. | Dimensions mm | | No. of slots | Grid mm | No. of dividers max. | Cell dimensions min. mm | No. of cells max. |
|----------------|---------------|---------------|-----|--------------|---------|----------------------|-------------------------|-------------------|
| 10-MB-K | 10002783-0001 | 352 | 100 | 7 | 50 | 22 | 50 x 20 x 100 | 138 |
| 10-MB-L | 10002782-0001 | 552 | 100 | 22 | 20 | 7 | | |
| 20-MB-K | 10002798-0001 | 352 | 200 | 7 | 50 | 22 | 50 x 20 x 200 | 138 |
| 20-MB-L | 10002781-0001 | 552 | 200 | 22 | 20 | 7 | | |

For individual compartment layout, dividers are sold separately.



Customer-Store-Container
CORTRONIC® and **CORTEC** (can be used with and without lid)

| Ref | Item-No. | Inner dimensions, mm without stacking lug | | | Outer dimensions, mm without stacking lug | | |
|----------------------|---------------|--|-----|-----|--|-----|-----|
| | | | | | (without lid) | | |
| 03-CSC-BLACK | 10003464-0001 | 362 | 251 | 60 | 389 | 278 | 67 |
| 05-CSC-BLACK | 10003341-0001 | 362 | 251 | 100 | 389 | 278 | 107 |
| 10-CSC-BLACK | 10003350-0001 | 362 | 251 | 139 | 389 | 278 | 146 |
| 15-CSC-BLACK | 10003423-0001 | 362 | 251 | 220 | 389 | 278 | 227 |
| 17-CSC-BLACK | 10003359-0001 | 551 | 362 | 60 | 578 | 389 | 67 |
| 19-CSC-BLACK | 10003432-0001 | 551 | 362 | 100 | 578 | 389 | 107 |
| 20-CSC-BLACK | 10003527-0001 | 551 | 362 | 139 | 578 | 389 | 146 |
| 30-CSC-BLACK | 10003530-0001 | 551 | 362 | 172 | 578 | 389 | 179 |
| 35-CSC-BLACK | 10003455-0001 | 551 | 362 | 220 | 578 | 389 | 227 |
| 36-CSC-BLACK* | 10005120 | 550 | 365 | 300 | 578 | 389 | 307 |
| 40-CSC-BLACK* | 10005187 | 550 | 365 | 400 | 578 | 389 | 410 |

* for 36-CSC and 40-CSC no dividers available

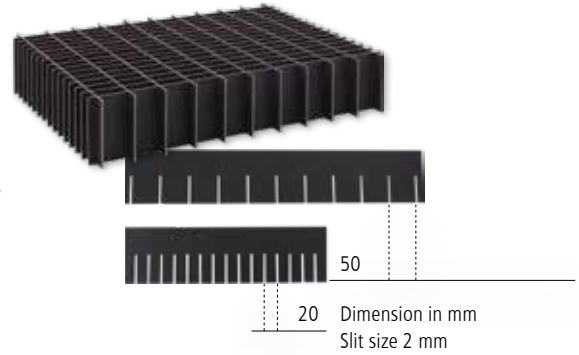
CSC Snap-on Lid
CORTRONIC®

| Ref | Item-No. | Inner dimensions, mm | | | Outer dimensions, mm | | |
|-------------------|---------------|----------------------|-----|----|----------------------|-----|----|
| | | | | | | | |
| 03-16-CSCD | 10002655-0001 | 388 | 281 | 30 | 399 | 299 | 35 |
| 17-40-CSCD | 10002653-0001 | 581 | 392 | 40 | 599 | 399 | 45 |



Dissipative Partition Inserts for CSC-Container

Standard color: Black



CSC Partition Inserts (solid board)

| Ref | Item-No. | Dimensions mm | No. of slots | Grid mm | No. of dividers max. | Cell dimen- sions min. mm | No. of cells max. |
|-------------------|----------|------------------|-----------------|------------|----------------------------|---------------------------------|-------------------------|
| 03-CSC-K | 12000030 | 249 60 | 10 | 20 | 6 | 50 x 20 x 60 | 77 |
| 03-CSC-L | 12000034 | 360 60 | 6 | 50 | 10 | | |
| 05-CSC-K | 12000031 | 249 100 | 10 | 20 | 6 | 50 x 20 x 100 | 77 |
| 05-CSC-L | 12000035 | 360 100 | 6 | 50 | 10 | | |
| 10-CSC-K | 12000032 | 249 139 | 10 | 20 | 6 | 50 x 20 x 139 | 77 |
| 10-CSC-L | 12000033 | 360 139 | 6 | 50 | 10 | | |
| 15-CSC-K | 12000036 | 249 220 | 10 | 20 | 6 | 50 x 20 x 220 | 77 |
| 15-CSC-L | 12000037 | 360 220 | 6 | 50 | 10 | | |
| 17-CSC-K | 12000039 | 360 60 | 15 | 20 | 11/24 | 50 x 20 x 60 | 160 |
| 17-CSC-L50 | 12000040 | 549 60 | 11 | 50 | 15 | | |
| 17-CSC-L20 | 12000042 | 549 60 | 24 | 20 | 15 | 20 x 20 x 60 | 400 |
| 19-CSC-K | 12000038 | 360 100 | 15 | 20 | 11/24 | 50 x 20 x 100 | 160 |
| 19-CSC-L50 | 12000041 | 549 100 | 11 | 50 | 15 | | |
| 19-CSC-L20 | 12000043 | 549 100 | 24 | 20 | 15 | 20 x 20 x 100 | 400 |
| 20-CSC-K | 12000044 | 360 139 | 15 | 20 | 11/24 | 50 x 20 x 139 | 160 |
| 20-CSC-L50 | 12000045 | 549 139 | 11 | 50 | 15 | | |
| 20-CSC-L20 | 12000046 | 549 139 | 24 | 20 | 15 | 20 x 20 x 139 | 400 |
| 30-CSC-K | 12000047 | 360 172 | 15 | 20 | 11/24 | 50 x 20 x 172 | 160 |
| 30-CSC-L50 | 12000048 | 549 172 | 11 | 50 | 15 | | |
| 30-CSC-L20 | 12000049 | 549 172 | 24 | 20 | 15 | 20 x 20 x 172 | 400 |
| 35-CSC-K | 12000050 | 360 220 | 15 | 20 | 11/24 | 50 x 20 x 220 | 160 |
| 35-CSC-L50 | 12000052 | 549 220 | 11 | 50 | 15 | | |
| 35-CSC-L20 | 12000051 | 549 220 | 24 | 20 | 15 | 20 x 20 x 220 | 400 |

Dividers are available individually, thus individual compartment sizes are possible.
Already assembled sets available on request.

Faltkartons / American Boxes

COR_{pro}TRONIC®

Adhesive film 10-KB is needed and sold separately (Page 17)

| Ref | Item-No. | Inner Dimensions, mm | | | Outer Dimensions, mm | | |
|---------------|---------------|----------------------|-----|-----|----------------------|-----|-----|
| 13-TAB | 10167095-0001 | 362 | 251 | 172 | 373 | 259 | 188 |
| 15-TAB | 10167096-0001 | 362 | 251 | 220 | 373 | 259 | 236 |
| 30-TAB | 10167097-0001 | 551 | 362 | 172 | 562 | 370 | 188 |



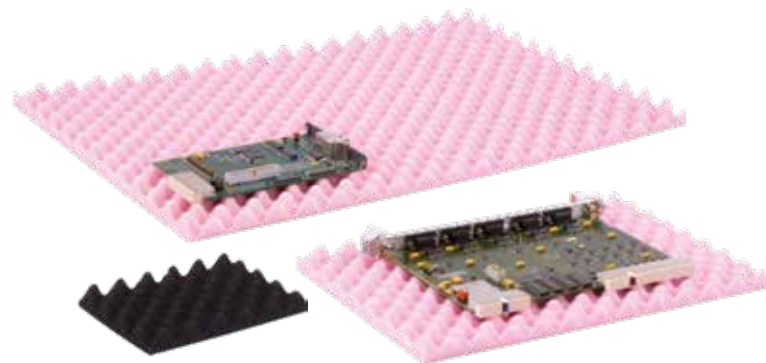
With additional creasing. Adhesive film 10-KB is needed and sold separately (Page 17)

| Ref | Item-No. | Inner Dimensions, mm | | | Outer Dimensions, mm | | | Additional Creasing at mm |
|---------------|---------------|----------------------|-----|-----|----------------------|-----|-----|---------------------------|
| 10-TAB | 10167094-0001 | 362 | 251 | 140 | 373 | 259 | 156 | 110 and 120 |
| 35-TAB | 10167098-0001 | 551 | 362 | 220 | 562 | 370 | 236 | 172 and 200 |

Profiled Foam for CSC and TAB

dissipative pink* or conductive**

| Ref | Item-No. | Dimensions, mm | | |
|---------------------------|----------|----------------|-----|----|
| 03 to 16-CSC NS AS | 12000113 | 361 | 250 | 20 |
| 03 to 16-CSC NS EL | 12000115 | 361 | 250 | 20 |
| 17 to 40-CSC NS AS | 12000114 | 550 | 361 | 20 |
| 17 to 40-CSC NS EL | 12000116 | 550 | 361 | 20 |



* Dissipative fuction of pink profiled foam: At least 6 months

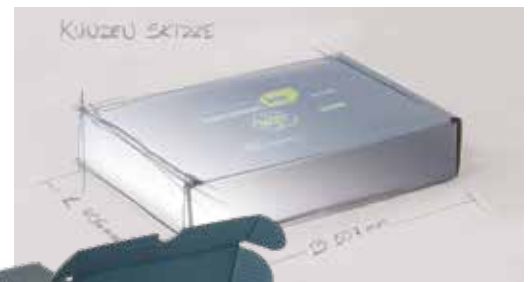
** Conductive function of black profiled foam: At least 5 years

COR_{pro}TRONIC®

Standard products made for quick supply

Custom-made items meet your special needs!

Some ESD sensitive products have special packaging or handling requirements. The versatility of COR_{pro}TRONIC® makes it possible for us to meet all your requirements, whether from stock or custom-made.



For shipping ESD sensitive parts

- » EPROM packaging
- » Dispatch boxes with profiled foam or film
- » Constructive dispatch boxes
- » CORPACK with profiled foam

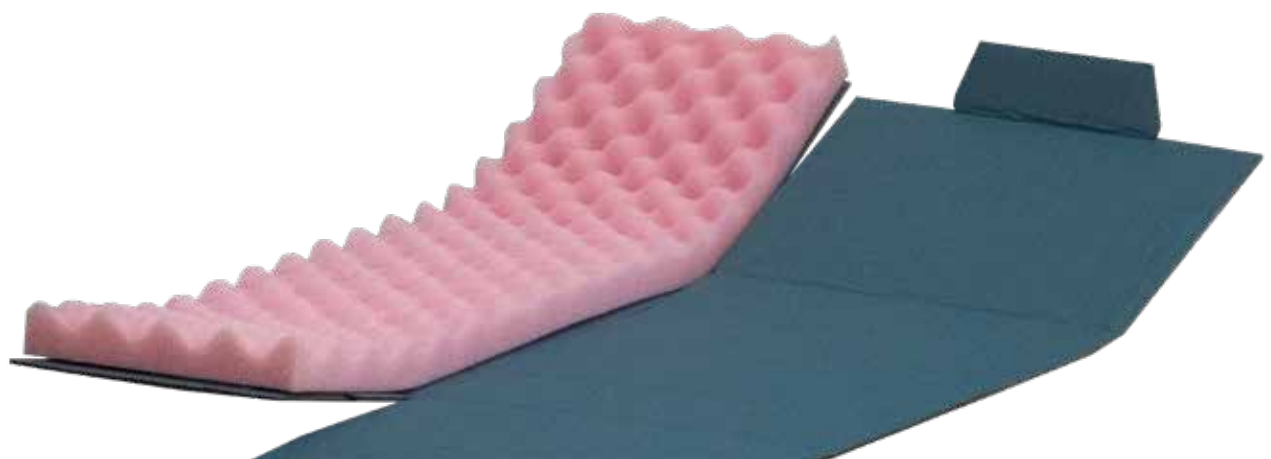


For production, in-plant handling and storage:

- » Stackable boxes
- » Trays
- » Reels, reel holders
- » Storage boxes
- » Partitioned boxes
- » Multibox
- » Fifo-Box

Worldwide availability!

COR_{pro}TRONIC® are used over decades in all parts of the world. Just call us or visit us on the web to find your next dealer.





CORRUST®

Corrosion Protection With A Vision

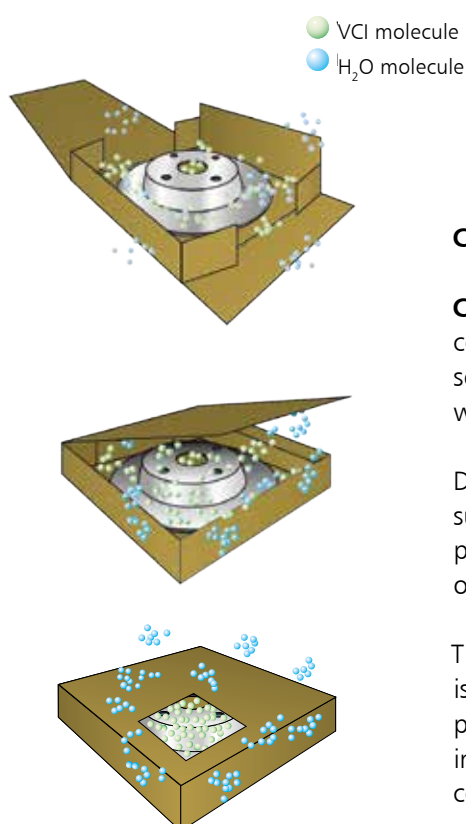
Packaging systems with
integrated corrosion inhibitors

CORRUST®

VCI Corrosion Protection Included

Protection against rust

Rust destroys metal. Rust is generated when sulphur dioxide and chloride are oxidised – such as by exposure to humid air. Therefore corrosion protection particularly is important when transporting and storing ferrous and non-ferrous metals for longer periods of time.



CORRUST® – A forward thinking principle

CORRUST® is a packaging system made from VCI-coated corrugated cardboard. This generously applied coating releases VCI molecules into the atmosphere inside the packaging – which subsequently comprises the actual corrosion protection.

Due to their polar character, these molecules attach to the surface of the metal products inside the packaging and thus prevent (passivate) the metal surface from reacting with oxygen.

The VCI coating applied to the corrugated cardboard is adjusted specifically to the packaging's relevant purpose and therefore ensures that the packaging's interior is always adequately saturated with VCI, and consequently provides long time protection for your product.

VCI: Volatile Corrosion Inhibitor

PROTECTION INCLUDED

Packaging with VCI corrosion protection is extremely easy to use and gives you a real competitive advantage.

CORRUST® packaging systems ensure smooth logistics processes with a significantly improved way to maintain the quality of your corrosive products



Protecting the environment

Corrosion damage not only affects trade, but also has an impact on the environment. **CORRUST®** is 100% recyclable and therefore ideal for humans and the environment, but also a safe choice when it comes to logistic costs.



We are able to simulate your shipment process in all relevant climate conditions to assure the best possible protection of your products.

Wrap - unwrap - and not a spot of rust inside

Traditionally, anti-corrosion packaging for transporting and shipping metal products entails coating a product in grease or a similar corrosion-inhibiting substance, then wrapping it, and then removing the coating again – all of which takes up quite a lot of time, which, ultimately, can drastically impact on the entire logistics chain. However, **CORRUST®** anti-corrosion packaging now makes this labour-intensive process a thing of the past, does not require any investments in corresponding washing systems or solvents and has been reduced to just that: Wrap, unwrap – and not a spot of rust inside!



CORRUST®

Safety

Corrugated cardboard packages are hygroscopic, i.e. they attract and absorb moisture from the air. This is an extremely useful feature since the cardboard can thus be used to hold large quantities of VCI. The **CORRUST®** VCI coating then forms a perfect barrier between the corrugated cardboard and the product inside. **CORRUST®** packaging systems can also, on request, be supplied with a moisture-repellent coating on the outside, which makes the system even more efficient for transporting products under difficult climatic conditions.



Protection categories

E

For protecting ferrous metals, chromium, nickel, silicon aluminium alloys, partially galvanized steel, GGL and GGG

NE (C)

For protecting copper, brass, bronze, nickel silver, copper and manganese aluminium alloys

NE (S)

For protecting magnesium and magnesium alloys, silver and manganese

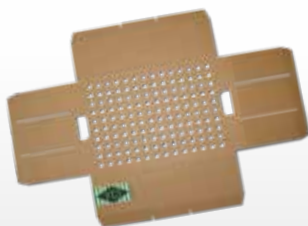
MM

For protecting combinations of ferrous and non-ferrous metals, zinc and manganese aluminium alloys, galvanized steel, zinc and copper materials

Example products



Pre-cuts / sheets



Die-Cuttings



Partitions / Inserts



RSC / American Boxes

SKINBOARD®
CORRUST SKINBOARD®



Skin Tight Protection
Corrugated board for skin packaging

SKINBOARD® CORRUST SKINBOARD®

Product Safety And Outstanding Presentation.

With **SKINBOARD®** tight skin foil wrapping, excellent fixture of the goods on the board is combined with attractive product presentation. The foil and the corrugated cardboard are sealed together by what is known as fibre cut.

This bonding method determines the characteristic properties of the packaging: When unpacking the product, a layer of paper remains attached to the foil, making the **SKINBOARD®** packaging very easy to handle.

Thanks to the use of high-strength adhesive, even heavy parts can be safely fixed to the cardboard for attractive presentation and increased sales.



Versatile skin packaging

*Strong, variable and functional:
Introducing the professional packaging
solution for your fragile products.*

*SKINBOARD® is a coated
corrugated board with
enhanced adhesion properties
for skin film packaging*



Options included as standard!

Release function:

For small fragile parts of low weight, the strength of the bond between the film and the cardboard must be reduced to a defined value. Special coats ensure that even the most delicate products can be properly positioned on the board and can be easily removed.

*SKINBOARD® is suitable for
packaging with skin foils
made in PE and Surlyn®.*



GUARANTEED QUALITY

As a product engineer for technically advanced components that are susceptible to corrosion, I trust **CORRUST® SKINBOARD** packaging from KOLB.

CORRUST SKINBOARD®

CORRUST SKINBOARD® products offer optimised protection against corrosion for sensitive products. The corrosion protection properties can be individually chosen, depending on the material properties of the packed goods.

We offer the following options:

- » Steel/iron, chromium
- » Brass, copper, bronze
- » Magnesium and magnesium alloys, silver
- » Multi-metal protection for products made from various metals



SKINBOARD® CORRUST SKINBOARD®

The perfect solution

The coated corrugated cardboard of the **KOLB CoatedProducts®** range is the ideal material for protective and sturdy packaging for products that are easily damaged by impact. It offers a range of advantages and thus meets the requirements of customers in a wide range of industries.

With **SKINBOARD®** we offer you an innovative product made in functional corrugated board that can be printed with your individual designs..

SKINBOARD® and **CORRUST SKINBOARD®** are suitable for combination with all current skin foils. For **CORRUST SKINBOARD®** we recommend using VCI skin foils.

To develop your customised packaging solution, we need the following information:

- » Properties of goods to be packed (material properties, size and weight)?
- » Required skin format?
- » Corrosion protection required?
- » Quantity?
- » Printing required?

If desired, we produce a sample packaging for your products free of charge. Why not visit our premises to discuss your ideas with us and to see how **SKINBOARD®** is processed on our skin packaging machine?

Thanks to a skin tight film cover the product will be both packed and presented in an outstanding manner.





VCI – Volatile Corrosion Inhibitor



VCI stands for vapour and volatile corrosion inhibitor and describes a process by which molecules from the skin/VCI coating evaporate and saturate the air inside the packaging. Due to their bi-polar character, these particles attach themselves to the surface of the metal products and fill recesses, thus preventing chemical reactions with oxygen on these surfaces (passivation).

- Particles lost through evaporation are replaced by evaporation of more VCI molecules from the coating, so that saturation of the air inside the packaging is ensured at all times.

Result: Dry preservation of the product, doing away with time-consuming and costly conventional preservation and cleaning measures.



SKINBOARD®

CORRUST SKINBOARD®

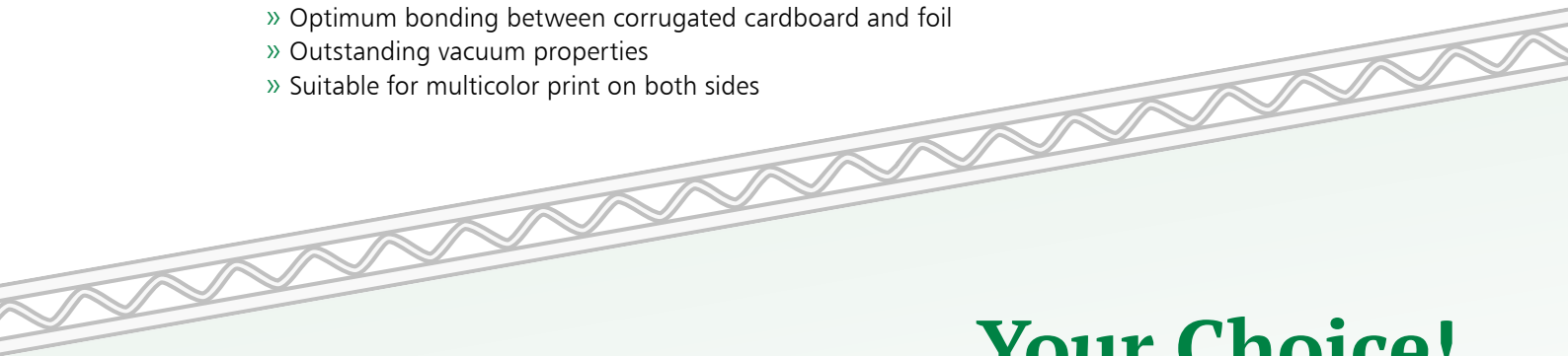
Skin packaging – on corrugated cardboard carrier material

» **Advantages:**

- » Highly dynamic protection for products that are sensitive to shock
- » Excellent stability thanks to fluted profile
- » No disintegration of the corrugated cardboard layers by the foil restoring forces (special gluing of the individual paper layers)
- » Integrated corrosion protection (with **CORRUST SKINBOARD®**)
- » Recyclable (paper cycle)
- »

» **The skin surface:**

- » Optimum bonding between corrugated cardboard and foil
- » Outstanding vacuum properties
- » Suitable for multicolor print on both sides



Your Choice!

The size:

All skin sizes

The board type:
(Scale 1:1)

E-Flute



B-Flute



C-Flute



FE-Flute



EE-Flute



EB-Flute



BC-Flute



The skin layer:
The finish:

SKINBOARD® or **CORRUST SKINBOARD®**
Color / print pattern



Types, Sizes, Dimensions



CORRUST®

CORRUST® corrugated cardboard packaging systems can be supplied in all shapes and sizes with features and properties most suited to meet your specific requirements. There is only one thing they all have in common: A high level of corrosion protection!

CORRUST SKINBOARD®

CORRUST SKINBOARD® features fully integrated corrosion protection and therefore offers maximum protection for vacuum-packed products.

CORRUST® Flex

This flexible VCI corrugated cardboard has been specifically designed to allow products with irregular shapes to be easily packaged and offers them maximum corrosion protection.

All **CORRUST®** packaging systems are available in all of the most common DIN corrugated cardboard types and/or – depending on their intended use – can be made specifically and totally to your specifications.



Product information

The above information is correct to the best of our knowledge and reflects the latest **CORRUST®** developments. Depending on the product to be packaged, the basic features of the different **CORRUST®** packaging types may vary. We are therefore unable to provide a universal warranty for our products. However, we are always happy to conduct tests with our customers to ascertain the level of corrosion protection needed for specific packaging solutions.

Storage in cool and dry conditions mandatory. Please observe handling instructions.



Grease & moisture: We have something against it!



Grease-resistant coating

Oily and greasy products such as ball bearings should be safely and securely packed throughout dispatch and storage. Thanks to the grease-resistant coating system from **KOLB CoatedProducts®** protection from grease is guaranteed throughout the entire duration of logistics and dispatch.

CORTEC Moisture-resistant coating

Moisture is the natural enemy of corrugated board packaging. But not where the moisture-resistant special coating on **KOLB CoatedProducts®** is concerned. Special hardened varnish creates a highly efficient barrier against any kind of moisture.

CORTEC Barrier

Recyclable protection against abrasion and moisture Thanks to the innovative barrier properties of CORTEC Barrier, we offer a customized, PAP20-compliant recyclable solution for packaging that protects against moisture and abrasion, especially for highly sensitive surfaces.

Wax coating

Whether as an insert or a complete export package, products can be sent on their way securely packed thanks to a special wax coating – even in hard climatic conditions.

Clever Coatings Due To Your Demand

Stop & Go: non-slip and sliding coatings

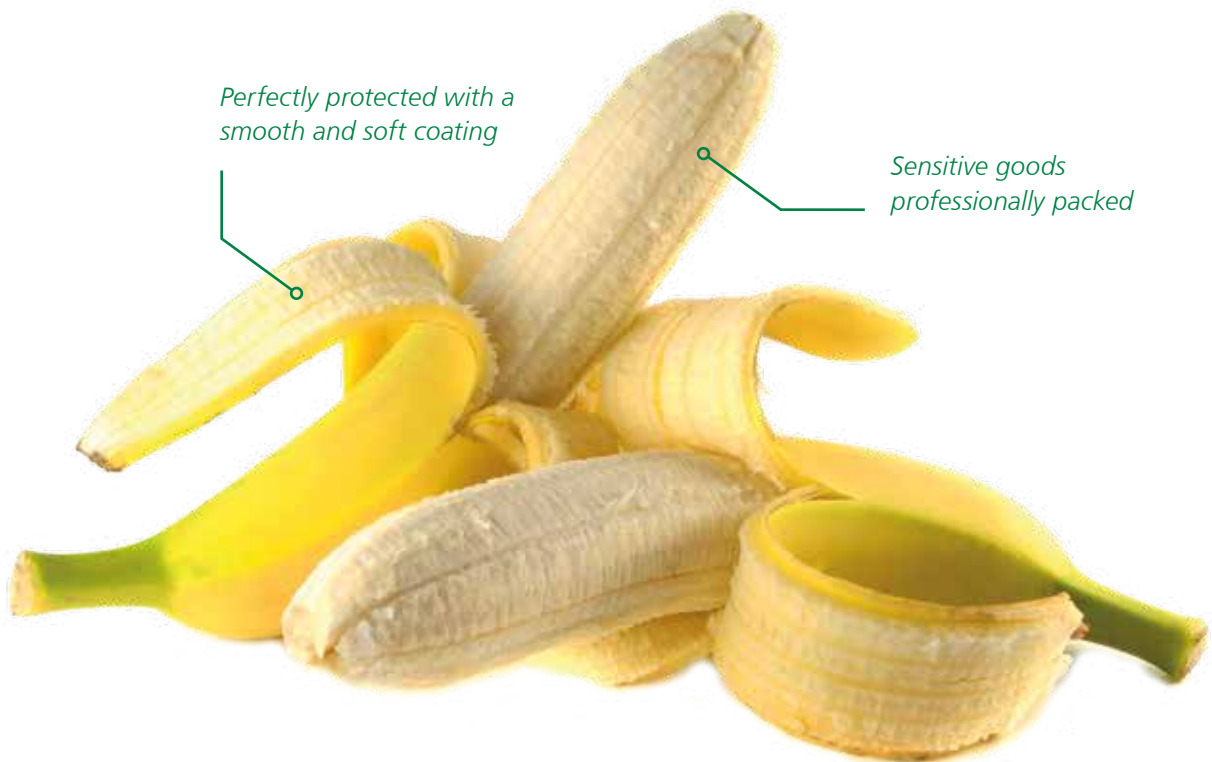
Packages or intermediate layers that have adhesive or gliding properties are used either to fix goods during transport or for the horizontal automatic loading of boxes and trays. Two different coatings provide different results, but they have one thing in common: process optimization and the simplification of your packaging process. Rub-resistant coatings also help you to send even rough items safely.



KOLB CoatedProducts®

Hard & Soft: Surface protection and secure transport for your product

Soft coatings serve to protect surface-sensitive goods. The slip-resistant function also has a positive effect on transport safety. Varnished and sensitive parts will be securely packed in a perfect manner.





Service for advanced

The reputation of the **KOLB** Group is not only based on its high-quality products. But the quality approach also covers all aspects of delivery and just-in-time availability of our goods.

The **KOLB Logistics** department has at its disposal a vehicle fleet with more than 60 trucks, and can thus guarantee just-in-time delivery and efficient order handling.

We are furthermore glad to assist you in every demand regarding packaging automation, co-packing and many more topics of state-of-the-art packaging processes.

HANS KOLB 
COATED PRODUCTS

KOLB CoatedProducts
A Division of
HANS KOLB Wellpappe GmbH & Co. KG
Dr.-Lauter-Straße 2, D-87700 Memmingen
Tel. +49 8331 975-308
cp@kolb-wellpappe.com

COATED PRODUCTS 
FRANCE

COATED PRODUCTS HKM
6, rue d'Alsace
F-67140 BARR
Tél.: +33 388 08 10 38
cguerat@coated-products.com

WWW.COATED-PRODUCTS.COM